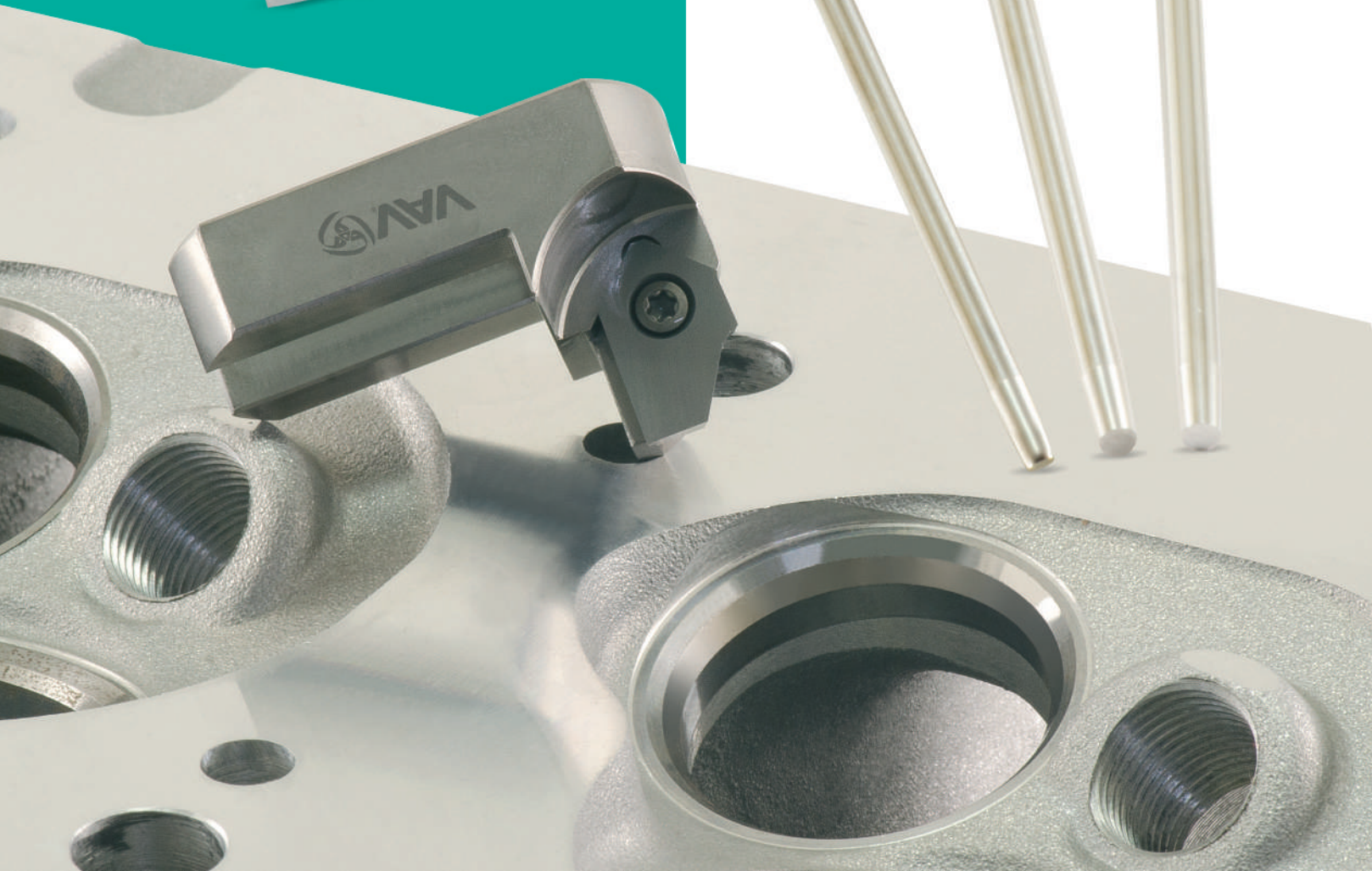
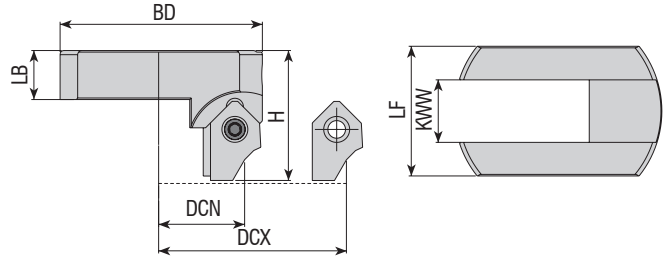


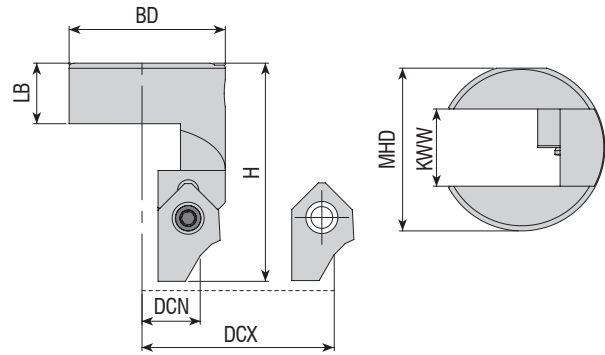
SUPAP

SUPAP YUVASI İŞLEME UÇLARI ve TAKIMLARI
VALVE SEAT INSERTS and TOOLHOLDERS
WENDESCHNEIDPLATTEN UND WERKZEUGE FÜR
VENTILSITZBEARBEITUNG





Takım Kodu Ordering Code Bestell-Bezeichnung	Stok Stock Lager	Takım Ölçüleri (mm) Dimension (mm) Abmessung (mm)						Kesici Uç Insert Wendeschneidplatte	Yedek Parçaları / Spare Parts / Ersatzteile				
		DCN DCX	BD	LB	H	KWW	LF		Sıkma Vidası Screw Schraube	Tork Anahtar Torx Key Torx-Schlüssel	Ayar Vidası Adjustable Einstellschraube	Anahtar Allen Key Innensechskantschlüssel	
VST-B11-2842	●	28-42	29	9.5	28.5	12	25.0						
VST-B11-4058	●	40-58	39	9.5	25.0	12	25.0	B11...	3008-M3x8	80-T08	2725-M5x10	AAL-01-02	



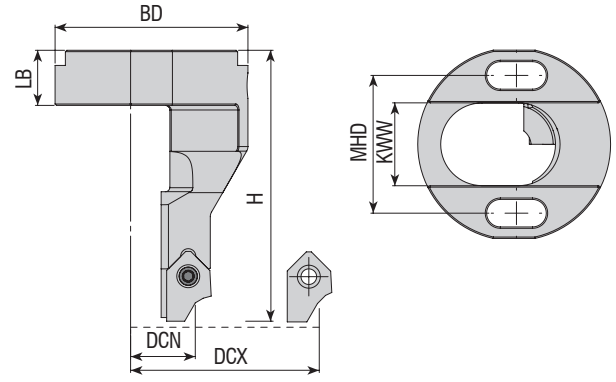
Takım Kodu Ordering Code Bestell-Bezeichnung	Stok Stock Lager	Takım Ölçüleri (mm) Dimension (mm) Abmessung (mm)						Kesici Uç Insert Wendeschneidplatte	Yedek Parçaları / Spare Parts / Ersatzteile				
		DCN DCX	BD	LB	H	KWW	MHD		Sıkma Vidası Screw Schraube	Tork Anahtar Torx Key Torx-Schlüssel	Ayar Vidası Adjustable Einstellschraube	Anahtar Allen Key Innensechskantschlüssel	
VST-B11-1830-A	●	18-30	24	9.5	34.0	12	25.3						

R: Sağ / Right / Rechts L: Sol / Left / Links

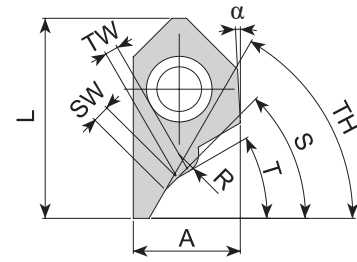
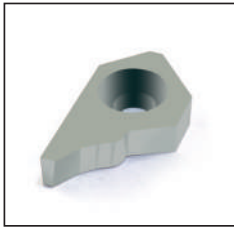
● Stokta / In Stock / Auf Lager ○ Stokta Yok / Non Stock Item / Kein Lagerartikel, Lieferzeit auf Anfrage

Sipariş Örneği/Ordering Example/Bestellbeispiel

1 ad./pcs./stück VST-B11-2842



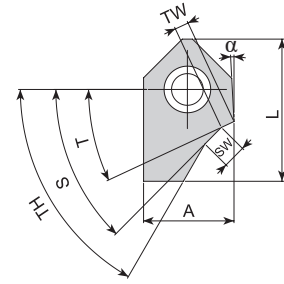
Takım Kodu Ordering Code Bestell-Bezeichnung	Stok Stock Lager	Takım Ölçüleri (mm) Dimension (mm) Abmessung (mm)						Kesici Uç Insert Wendeschneidplatte	Yedek Parçaları / Spare Parts / Ersatzteile				
		DCN DCX	BD	LB	H	KWW	MHD		Sıkma Vidası Screw Schraube	Tork Anahtar Torx Key Torx-Schlüssel	Ayar Vidası Adjustable Einstellschraube	Anahtar Allen Key Innensechskantschlüssel	
VST-B11-2032-A	●	20-32	42	12	59	18	30	B11...					
VST-B11-2434-A	●	24-34	26	14	40	11	18.1						
VST-B11-2956-A	●	26-56	49	11.7	43.7	18	40						



Uç Kodu Insert Code Wendepplatten-Bezeichnung	Stok Stock Lager	Uç Ölçüleri (mm) Insert Dimension (mm) Abmessung (mm)									
		S°	SW	T°	TW	TH°	A	L	α	R	
B11013	●	45°	1.3	30°	1	60°	8.15	15.10	3°	1.50	

R: Sağ / Right / Rechts L: Sol / Left / Links
● Stokta / In Stock / Auf Lager ○ Stokta Yok / Non Stock Item / Kein Lagerartikel, Lieferzeit auf Anfrage

Sipariş Örneği/Ordering Example/Bestellbeispiel
1 ad./pcs./stück VST-B11-2032-A

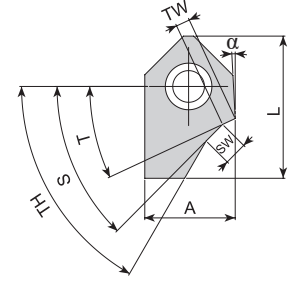


Uç Kodu
Insert Code
Wendepplatten-Bezeichnung

Stok
Stock
Lager

Uç Ölçüleri (mm)
Insert Dimension (mm)
Abmessung (mm)

		S°	SW	T°	TW	TH°	A	L	α
B11003	●	45°	1.3	25°	1.1	52°	9.7	15.25	3°
B11004	●	45°	1.6	25°	1.3	52°	9.7	15.25	3°
B11005	●	45°	2	25°	1.3	52°	9.7	15.25	3°
B11006	●	45°	2.5	25°	1.5	52°	9.7	15.25	3°
B11007	●	45°	1.5	30°	1.5	60°	9.7	15.25	3°
B11008	●	45°	1.3	25°	1.1	60°	9.7	15.25	3°
B11009	●	45°	1.6	25°	1.3	60°	9.7	15.25	3°
B11010	●	45°	2	25°	1.3	60°	9.7	15.25	3°
B11011	●	30°	2	15°	1.8	60°	9.7	15.25	3°
B11012	●	36°	2	15°	1.6	60°	9.7	15.25	3°
B11014	●	45°	2.5	25°	1.5	60°	9.7	15.25	3°
B11016	●	30°	1.5	15°	1.3	60°	9.7	15.25	3°
B11017	●	30°	2.5	15°	1.8	60°	9.7	15.25	3°
B11018	●	36°	2.5	15°	1.6	60°	9.7	15.25	3°
B11019	●	20°	2.5	10°	2	75°	9.7	15.25	3°
B11020	●	45°	1.3	25°	1.1	52°	7.7	15.25	3°
B11021	●	30°	3	15°	1.8	60°	9.7	15.25	3°
B11022	●	45°	3	30°	1.8	60°	9.7	15.25	3°
B11029	●	40°	2.5	25°	1.5	60°	9.7	15.25	3°
B11030	●	20°	2	10°	1.3	60°	9.7	15.25	3°
B11031	●	45°	1.8	30°	1.3	60°	9.7	15.25	3°
B11032	●	45°	1.5	30°	1	52°	9.7	15.25	3°
B11033	●	45°	2	30°	1.1	52°	9.7	15.25	3°
B11034	●	45°	2.5	30°	1.3	52°	9.7	15.25	3°
B11035	●	30°	1.5	15°	1	45°	9.7	15.25	3°
B11036	●	30°	2	15°	1.1	45°	9.7	15.25	3°
B11037	●	30°	2.5	15°	1.3	45°	9.7	15.25	3°
B11038	●	25°	2	15°	2	45°	9.7	15.25	3°
B11039	●	30°	2	15°	1.4	60°	9.7	15.25	3°
B11040	●	40°	2	15°	2	60°	9.7	15.25	3°
B11042	●	45°	1	30°	1.2	60°	9.7	15.25	3°
B11043	●	45°	1	35°	1.6	52°	9.7	15.25	3°
B11044	●	45°	1.3	30°	1	60°	9.7	15.25	3°
B11045	●	45°	1.5	30°	1	60°	9.7	15.25	3°
B11046	●	45°	1.8	30°	1	60°	9.7	15.25	3°
B11047	●	45°	1.8	30°	1.6	60°	9.7	15.25	3°
B11048	●	45°	1	25°	1.4	60°	9.7	15.25	3°
B11049	●	45°	1.50	25°	1.4	60°	9.7	15.25	3°
B11050	●	45°	2	25°	1.4	60°	9.7	15.25	3°



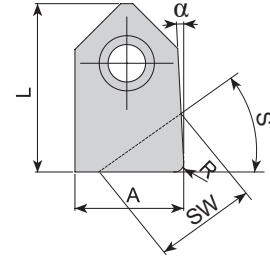
Uç Kodu Insert Code Wendeplatten-Bezeichnung	Stok Stock Lager	Uç Ölçüleri (mm) Insert Dimension (mm) Abmessung (mm)							
		S°	SW	T°	TW	TH°	A	L	α
B11051	●	45°	3	25°	1.4	60°	9.7	15.25	3°
B11052	●	30°	1.5	15°	1.4	60°	9.7	15.25	3°
B11053	●	30°	2.5	15°	1.8	60°	9.7	15.25	3°
B11054	●	45°	1	15°	1	60°	9.7	15.25	3°
B11055	●	45°	1.5	30°	1.8	60°	9.7	15.25	3°
B11056	●	45°	2	30°	1.2	60°	9.7	15.25	3°
B11058	●	35°	2	15°	1.6	60°	9.7	15.25	3°
B11061	●	45°	1	25°	1.0	60°	7.7	15.25	3°
B11062	●	30°	1.3	15°	1.0	52°	7.7	15.25	3°
B11063	●	38°	2.5	15°	1.60	60°	9.7	15.25	3°
B11064	●	30°	2	15°	1.40	60°	9.7	15.25	3°
B11065	●	45°	1	25°	0.8	52°	7.7	15.25	3°
B11066	●	20°	3	10°	2.0	75°	9.7	15.25	3°
B11069	●	30°	3	15°	1.8	45°	9.7	15.25	3°
B11070	●	45°	1.2	32°	1	60°	8.15	15.10	3°
B11071	●	45°	1	32°	1	60°	8.15	15.10	3°
B11074	●	45°	1.5	30°	1.4	60°	9.7	15.25	3°
B11075	●	45°	2	15°	1	60°	9.7	15.25	3°
B11076	●	30°	1.90	15°	1	45°	9.7	15.25	3°
B11077	●	30°	2.5	15°	1.4	60°	9.7	15.25	3°
B11078	●	45°	1.6	30°	1.4	60°	9.7	15.25	3°
B11079	●	30°	1.3	15°	2.0	45°	9.7	15.25	3°
B11080	●	30°	1.8	15°	2.0	45°	9.7	15.25	3°
B11081	●	30°	3.0	15°	2.0	45°	9.7	15.25	3°
B11082	●	45°	1.0	30°	2.0	60°	9.7	15.25	3°
B11083	●	45°	1.1	30°	2.0	60°	9.7	15.25	3°
B11084	●	45°	1.2	30°	2.0	60°	9.7	15.25	3°
B11085	●	45°	1.3	30°	2.0	60°	9.7	15.25	3°
B11086	●	45°	1.6	30°	2.0	60°	9.7	15.25	3°
B11087	●	45°	2.0	30°	2.0	60°	9.7	15.25	3°
B11088	●	45°	2.5	30°	2.0	60°	9.7	15.25	3°
B11089	●	35°	2.0	15°	1.5	70°	9.7	15.25	3°
B11090	●	35°	2.5	15°	2.5	70°	9.7	15.25	3°
B11091	●	25°	2.5	15°	2.0	45°	9.7	15.25	3°
new B11096	●	45°	1.0	25°	1.8	60°	9.7	15.25	3°
new B11095	●	45°	1.5	25°	1.1	52°	7.7	15.25	3°

R: Sağ / Right / Rechts L: Sol / Left / Links

● Stokta / In Stock / Auf Lager ○ Stokta Yok / Non Stock Item / Kein Lagerartikel, Lieferzeit auf Anfrage

Sipariş Örneği/Ordering Example/Bestellbeispiel

1 ad./pcs./stück B11051



Uç Kodu
Insert Code
Wendeplatten-Bezeichnung

Stok
Stock
Lager

Uç Ölçüleri (mm)
Insert Dimension (mm)
Abmessung (mm)

		S°	SW	A	L	α	R
B11015	●	0°	9.85	9.85	15.10	3°	0.80
B11023	●	0°	7.7	7.7	15.10	3°	0.80
B11024	●	20°	8.2	9.75	15.10	3°	-
B11025	●	25°	10	9.65	15.10	3°	-
B11026	●	30°	9	9.65	15.10	3°	-
B11027	●	35°	10	9.6	15.10	3°	-
B11028	●	45°	8.9	9.55	15.10	3°	-
B11057	●	0°	9.6	9.7	14.8	1°	0.2
B11067	●	0°	9.9	9.7	15.10	3°	0.2
B11073	●	36°	10	9.7	15.10	3°	-
B11092	●	15°	8.2	9.5	15.10	3°	-
B11093	●	60°	8.4	9.5	15.10	3°	-
new B11094	●	0°	9.6	9.6	12.0	4°	0.80

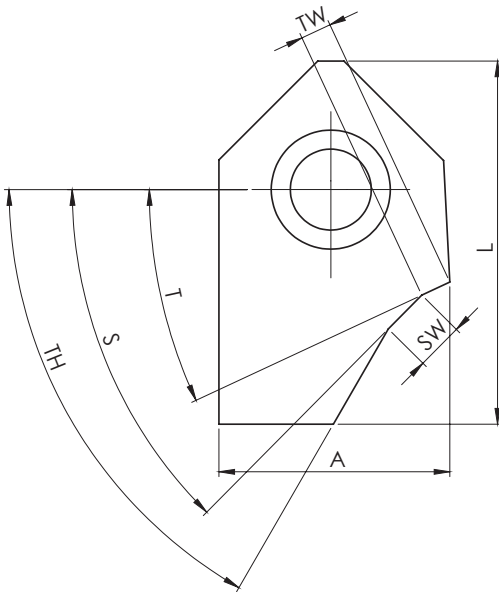
R: Sağ / Right / Rechts L: Sol / Left / Links

● Stokta / In Stock / Auf Lager ○ Stokta Yok / Non Stock Item / Kein Lagerartikel, Lieferzeit auf Anfrage

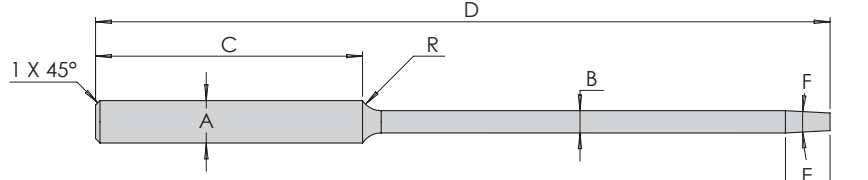
Sipariş Örneği/Ordering Example/Bestellbeispiel

1 ad./pcs./stück B11015

SUPAP UCU BİLGİ ALMA FORMU
INFORMATION REQUEST FORM FOR VALVE SEAT INSERTS
INFORMATIONSFÖRMULAR FÜR VENTILSITZE



TW :	
L :	
SW :	
A :	
T° :	
S° :	
TH° :	
İLETİŞİM İÇİN: CONTACT: KONTAKT:	



Uç Kodu Insert Code Wendeplatten-Bezeichnung	Stok Stock Lager	Uç Ölçüleri (mm) Insert Dimension (mm) Abmessung (mm)						
		Ø B (h7)	C	R	D	Ø A (h6)	E	F
VCPM-0497-165	●	4.97	60	5	165	9.525	10	6°
VCPM-0498-165	●	4.98	60	5	165	9.525	10	6°
VCPM-0499-165	●	4.99	60	5	165	9.525	10	6°
VCPM-0500-165	●	5.00	60	5	165	9.525	10	6°
VCPM-0549-165	●	5.49	60	5	165	9.525	10	6°
VCPM-0550-165	●	5.50	60	5	165	9.525	10	6°
VCPM-0597-165	●	5.97	60	5	165	9.525	10	6°
VCPM-0598-165	●	5.98	60	5	165	9.525	10	6°
VCPM-0599-165	●	5.99	60	5	165	9.525	10	6°
VCPM-0600-165	●	6.00	60	5	165	9.525	10	6°
VCPM-0605-165	●	6.05	60	5	165	9.525	10	6°
VCPM-0606-165	●	6.06	60	5	165	9.525	10	6°
VCPM-0659-165	●	6.59	60	5	165	9.525	10	6°
VCPM-0660-165	●	6.60	60	5	165	9.525	10	6°
VCPM-0697-165	●	6.97	60	5	165	9.525	10	6°
VCPM-0698-165	●	6.98	60	5	165	9.525	10	6°
VCPM-0699-165	●	6.99	60	5	165	9.525	10	6°
VCPM-0700-165	●	7.00	60	5	165	9.525	10	6°
VCPM-0797-165	●	7.97	60	5	165	9.525	10	6°
VCPM-0798-165	●	7.98	60	5	165	9.525	10	6°
VCPM-0799-165	●	7.99	60	5	165	9.525	10	6°
VCPM-0800-165	●	8.00	60	5	165	9.525	10	6°
VCPM-0801-165	●	8.01	60	5	165	9.525	10	6°
VCPM-0802-165	●	8.02	60	5	165	9.525	10	6°
VCPM-0803-165	●	8.03	60	5	165	9.525	10	6°
VCPM-0824-165	●	8.24	60	5	165	9.525	10	6°
VCPM-0825-165	●	8.25	60	5	165	9.525	10	6°
VCPM-0849-165	●	8.49	60	5	165	9.525	10	6°
VCPM-0850-165	●	8.50	60	5	165	9.525	10	6°
VCPM-0897-165	●	8.97	60	5	165	9.525	10	6°
VCPM-0898-165	●	8.98	60	5	165	9.525	10	6°
VCPM-0899-165	●	8.99	60	5	165	9.525	10	6°
VCPM-0900-165	●	9.00	60	5	165	9.525	10	6°

R: Sağ / Right / Rechts L: Sol / Left / Links

Stokta / In Stock / Auf Lager ○ Stokta Yok / Non Stock Item / Kein Lagerartikel, Lieferzeit auf Anfrage

Sipariş Örneği/Ordering Example/Bestellbeispiel

1 ad./pcs./stück VCPM-0497-165