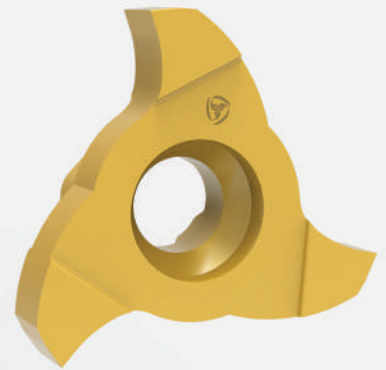
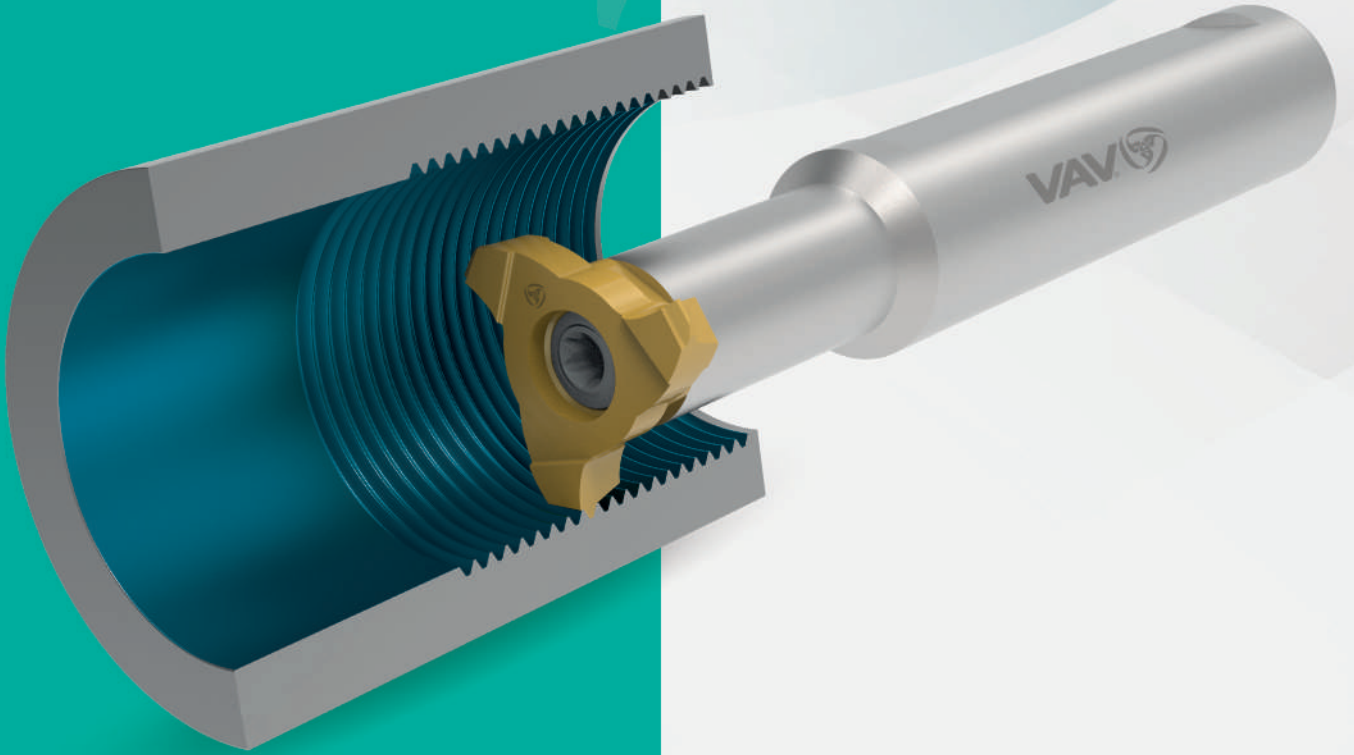


MİMİLL UÇLARI VE TAKIMLARI

MİMİLL INSERTS AND TOOLS

MİMİLL WENDESCHIEDPLATTEN WERKZEUGE



www.vavkesici.com.tr

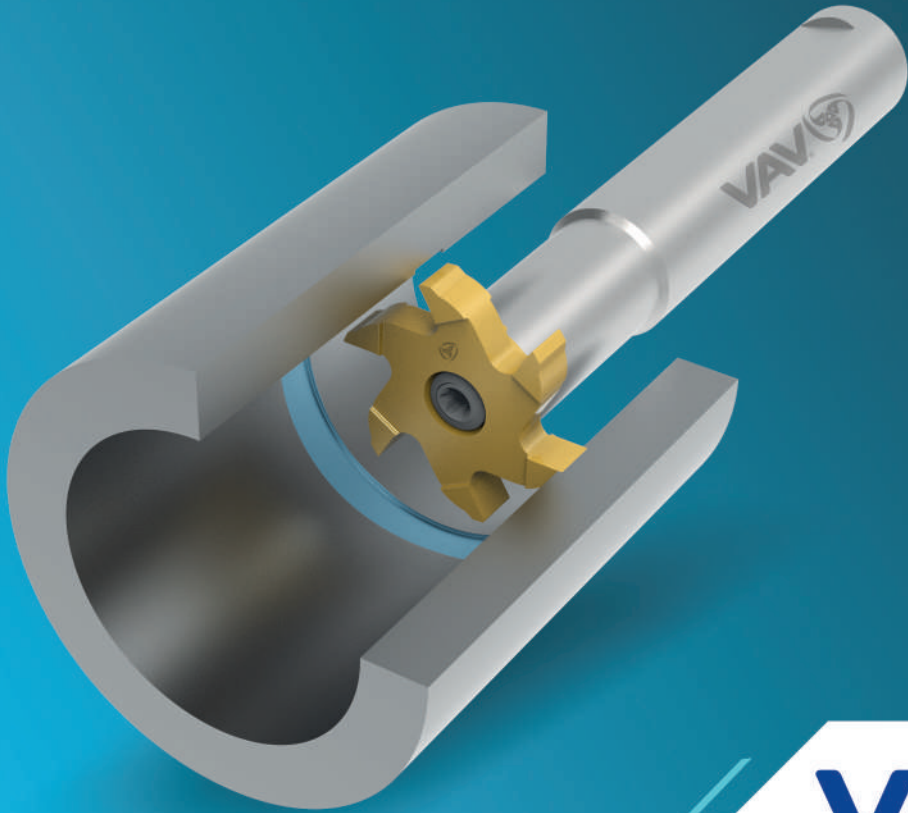
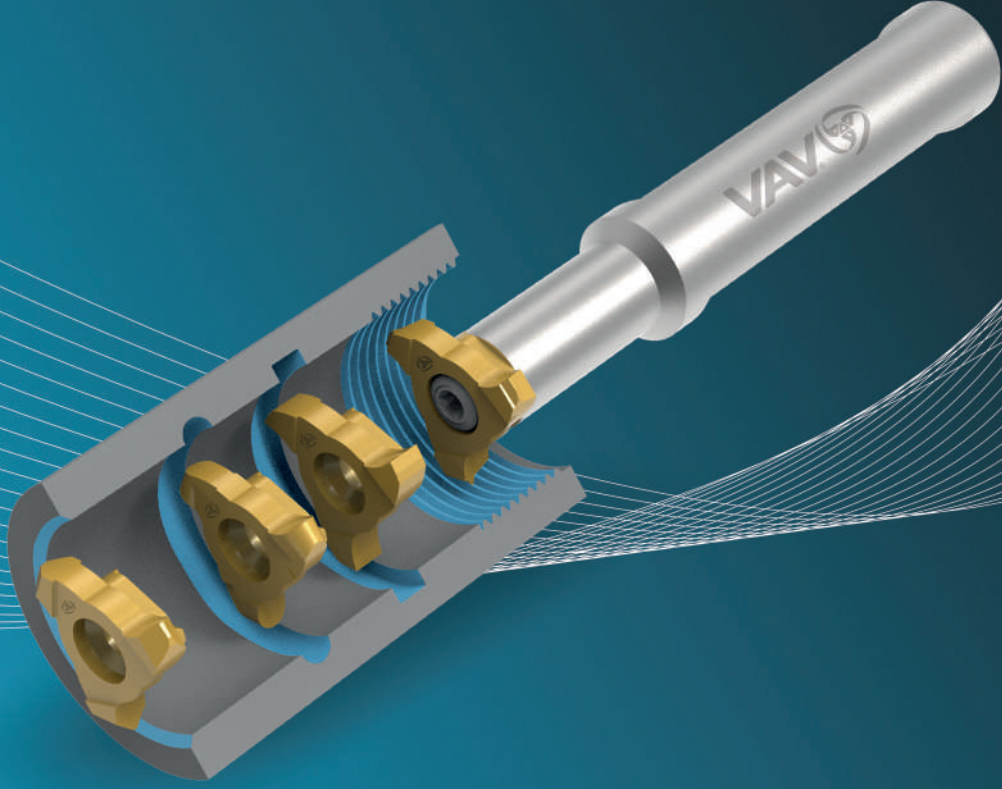
Yenilikler için bizi takip edin.
Follow us for news.
Für Neuheiten bitte uns folgen.

2025'te Stoklarda

**It will be available
at our stocks in 2025**

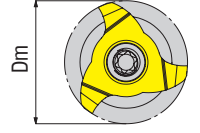
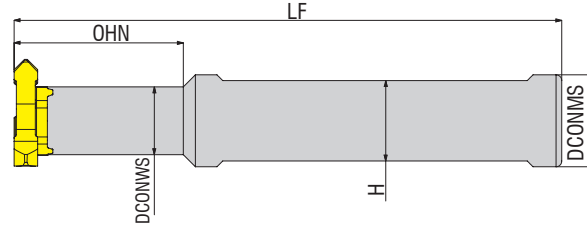
*Es wird im Jahr 2025
im Lager verfügbar sein*

MİMİLL UÇLARI VE TAKIMLARI
MIMILL INSERTS AND TOOLS
MIMILL WENDESCHIEDPLATTEN WERKZEUGE



Ø Ds 17.7

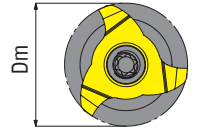
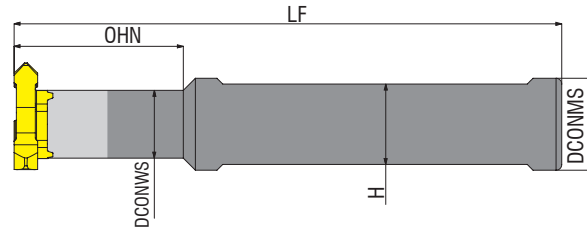
ÇELİK ŞAFT
STEEL SHAFT
STAHL SCHAFT



Takım Kodu Ordering Code Bestell-Bezeichnung	Stok Stock Lager	Takım Ölçüleri (mm) Dimension (mm) Abmessung (mm)					Kesici Uç Insert Wendeschneidplatte	Yedek Parçaları / Spare Parts / Ersatzteile		
		DCONMS	DCONWS	LF	OHN	H		Sıkma Vidası Screw Klemmschraube	Tork Anahtar Torx Key Torx Innensechskantschlüssel	
A12E-MM1803-018	○	12	9	70	18	11	MM1803...	4015-M4x12	80-T15	
A16F-MM1803-026	○	16	9	80	26	15				

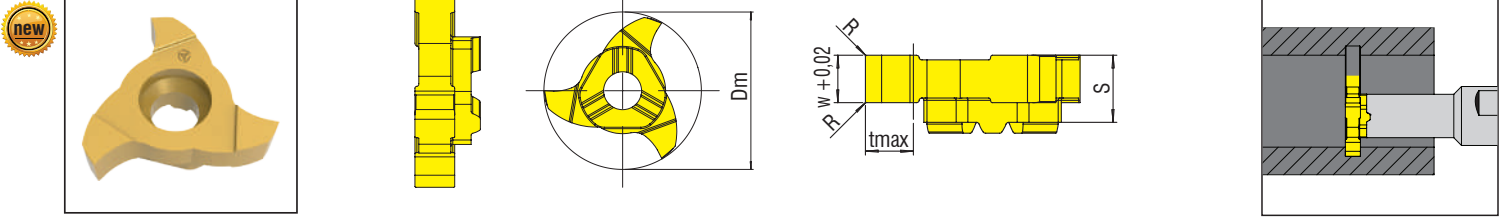
Ø Ds 17.7

KARBÜR ŞAFT
CARBIDE SHAFT
HARTMETALLSCHAFT

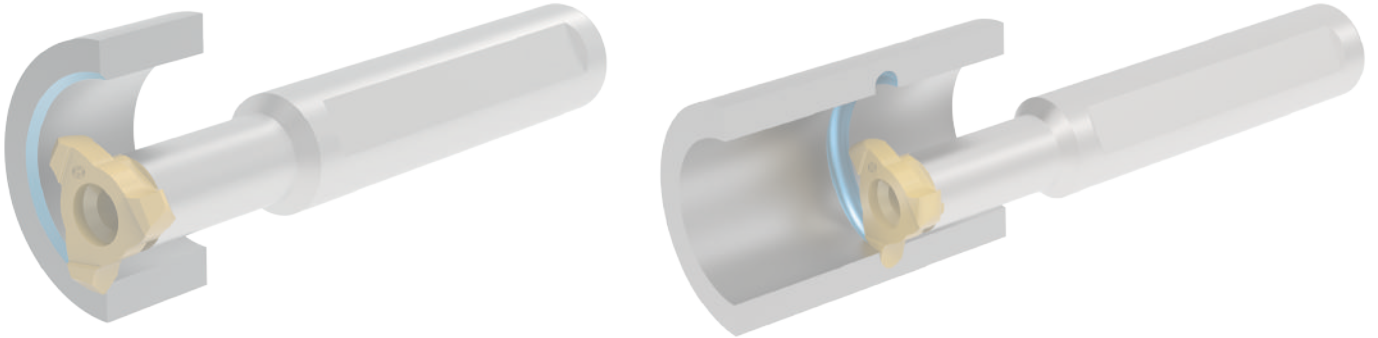


Takım Kodu Ordering Code Bestell-Bezeichnung	Stok Stock Lager	Takım Ölçüleri (mm) Dimension (mm) Abmessung (mm)					Kesici Uç Insert Wendeschneidplatte	Yedek Parçaları / Spare Parts / Ersatzteile		
		DCONMS	DCONWS	LF	OHN	H		Sıkma Vidası Screw Klemmschraube	Tork Anahtar Torx Key Torx Innensechskantschlüssel	
E12H-MM1803-045	○	12	9	100	45	MM1803...	4015-M4x12	80-T15		
E12J-MM1803-064	○	12	9	110	64				-	
E16H-MM1803-032	○	16	9	100	32				-	
E16J-MM1803-045	○	16	9	110	45				-	
E16K-MM1803-064	○	16	9	125	64				-	

∅ Ds 17.7



Uç Kodu Insert Code Wendepplatten-Bezeichnung	Stok Stock Lager	Uç Ölçüleri (mm) Insert Dimension (mm) Abmessung (mm)						UYUMLU TAKIM / COMPATIBLE TOOLHOLDER / KOMPATIBLES WERKZEUG	Kalite Grade Sorte
		Ds	W	R	tmax	S	Z		
MM1803.G.0150.010.0177	○	∅17.7	1.5	0.1	3.5	5.7	3-MM1803-0..	VP3001
MM1803.G.0200.020.0177	○	∅17.7	2.00	0.2	3.5	5.7	3		VP3001
MM1803.G.0250.020.0177	○	∅17.7	2.5	0.2	3.5	5.7	3		VP3001
MM1803.G.0300.010.0177	○	∅17.7	3	0.2	3.5	5.7	3		VP3001



DİĞER PROFİL ÇEŞİTLERİ / THE OTHERS PROFILE TYPES / ANDERE PROFIL-TYPEN



THREAD PROFILE



GEAR PROFILE



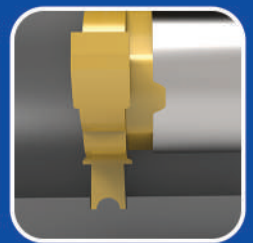
RADIUS GROVE PROFILE



CIRCLIP PROFILE



CHAMFER PROFILE

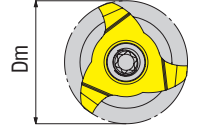
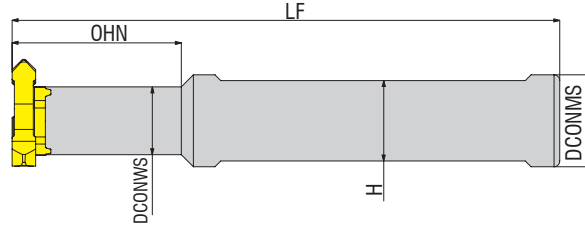


SPECIAL PROFILE

*Diğer profil uçlar özel taleplere göre üretilmektedir. / Profiled inserts are manufactured according to customer special requirements. /
Die Profil-Wendeschneidplatten werden nach Kundenwunsch gefertigt.

Ø Ds 21.7

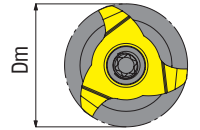
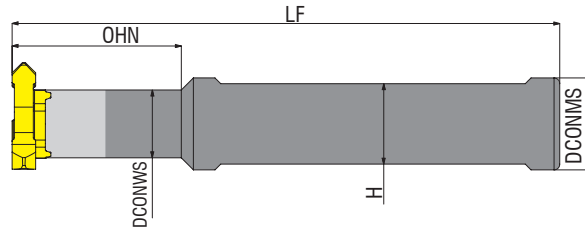
ÇELİK ŞAFT
STEEL SHAFT
STAHL SCHAFT



Takım Kodu Ordering Code Bestell-Bezeichnung	Stok Stock Lager	Takım Ölçüleri (mm) Dimension (mm) Abmessung (mm)					Kesici Uç Insert Wendeschneidplatte	Yedek Parçaları / Spare Parts / Ersatzteile		
		DCONMS	DCONWS	LF	OHN	H		Sıkma Vidası Screw Klemmschraube	Tork Anahtar Torx Key Torx Innensechskantschlüssel	
A12E-MM2203-018	○	12	12	70	18	11	MM2203...	1020-M5x14	80-T20	
A16F-MM2203-026	○	16	12	80	26	15				

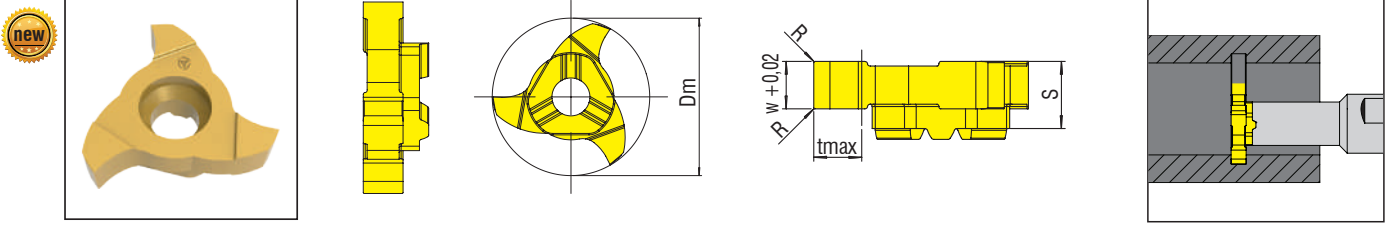
Ø Ds 21.7

KARBÜR ŞAFT
CARBIDE SHAFT
HARTMETALLSCHAFT

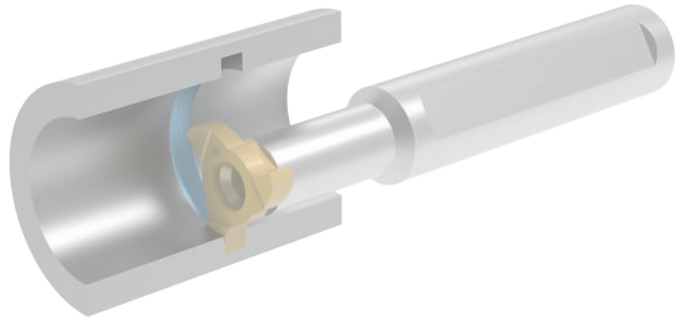
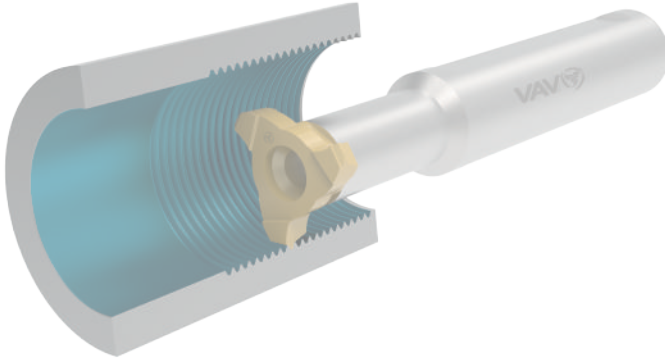


Takım Kodu Ordering Code Bestell-Bezeichnung	Stok Stock Lager	Takım Ölçüleri (mm) Dimension (mm) Abmessung (mm)					Kesici Uç Insert Wendeschneidplatte	Yedek Parçaları / Spare Parts / Ersatzteile		
		DCONMS	DCONWS	LF	OHN	H		Sıkma Vidası Screw Klemmschraube	Tork Anahtar Torx Key Torx Innensechskantschlüssel	
E16H-MM2203-042	○	16	12	100	42	-	MM2203...	1020-M5x14	80-T20	
E16K-MM2203-060	○	16	12	125	60	-				
E16N-MM2203-085	○	16	12	160	85	-				

ø Ds 21.7



Uç Kodu Insert Code Wendeplatten-Bezeichnung	Stok Stock Lager	Uç Ölçüleri (mm) Insert Dimension (mm) Abmessung (mm)						UYUMLU TAKIM / COMPATIBLE TOOLHOLDER / KOMPATIBLES WERKZEUG	Kalite Grade Sorte
		Ds	W	R	tmax	S	Z		
MM2203.G.0150.010.2177	○	ø21.7	1.5	0.1	4.5	5.7	3-MM2203-0..	VP3001
MM2203.G.0200.020.2177	○	ø21.7	2.00	0.2	4.5	5.7	3		VP3001
MM2203.G.0250.020.2177	○	ø21.7	2.5	0.2	4.5	5.7	3		VP3001
MM2203.G.0300.020.2177	○	ø21.7	3	0.2	4.5	5.7	3		VP3001
MM2203.G.0350.020.2177	○	ø21.7	3.5	0.2	4.5	5.7	3		
MM2203.G.0400.020.2177	○	ø21.7	4	0.2	4.5	5.7	3		



DİĞER PROFİL ÇEŞİTLERİ / THE OTHERS PROFILE TYPES / ANDERE PROFIL-TYPEN



THREAD PROFILE



GEAR PROFILE



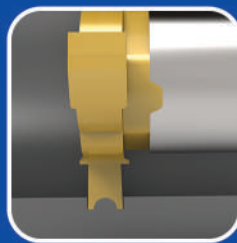
RADIUS GROVE PROFILE



CIRCLIP PROFILE



CHAMFER PROFILE

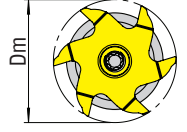
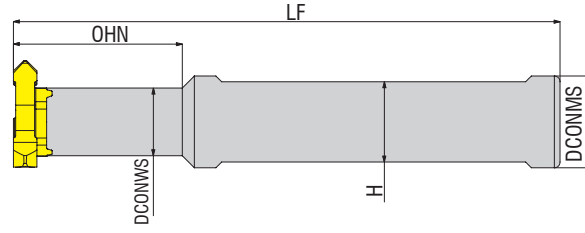


SPECIAL PROFILE

*Diğer profil uçlar özel taleplere göre üretilmektedir. / Profiled inserts are manufactured according to customer special requirements. / Die Profil-Wendescheidplatten werden nach Kundenwunsch gefertigt.

Ø Ds 27.7

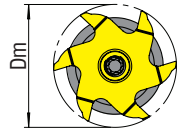
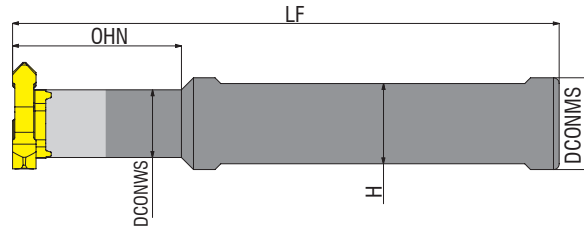
ÇELİK ŞAFT
STEEL SHAFT
STAHL SCHAFT



Takım Kodu Ordering Code Bestell-Bezeichnung	Stok Stock Lager	Takım Ölçüleri (mm) Dimension (mm) Abmessung (mm)					Kesici Uç Insert Wendescheidplatte	Yedek Parçaları / Spare Parts / Ersatzteile		
		DCONMS	DCONWS	LF	OHN	H		Sıkma Vidası Screw Klemmschraube	Tork Anahtar Torx Key Torx Innensechskantschlüssel	
A12E-MM2806-020	○	12	14.5	70	20	11	MM2806	1020-M5x14	80-T20	
A16G-MM2806-036	○	16	14.5	90	36	15				
A20H-MM2806-036	○	20	14.5	100	36	18				

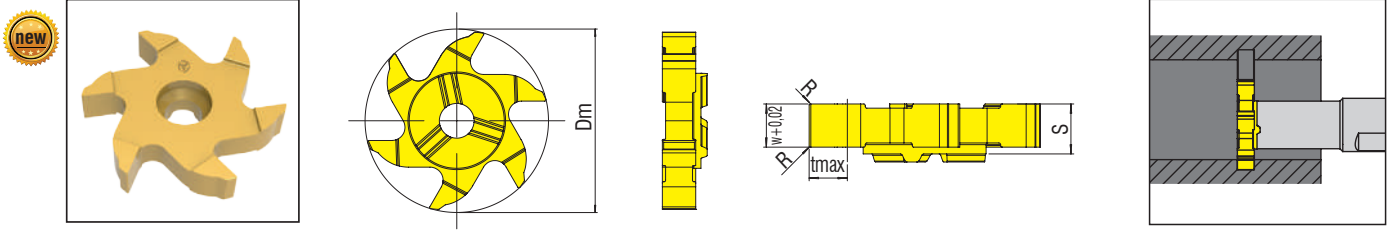
Ø Ds 27.7

KARBÜR ŞAFT
CARBIDE SHAFT
HARTMETALLSCHAFT

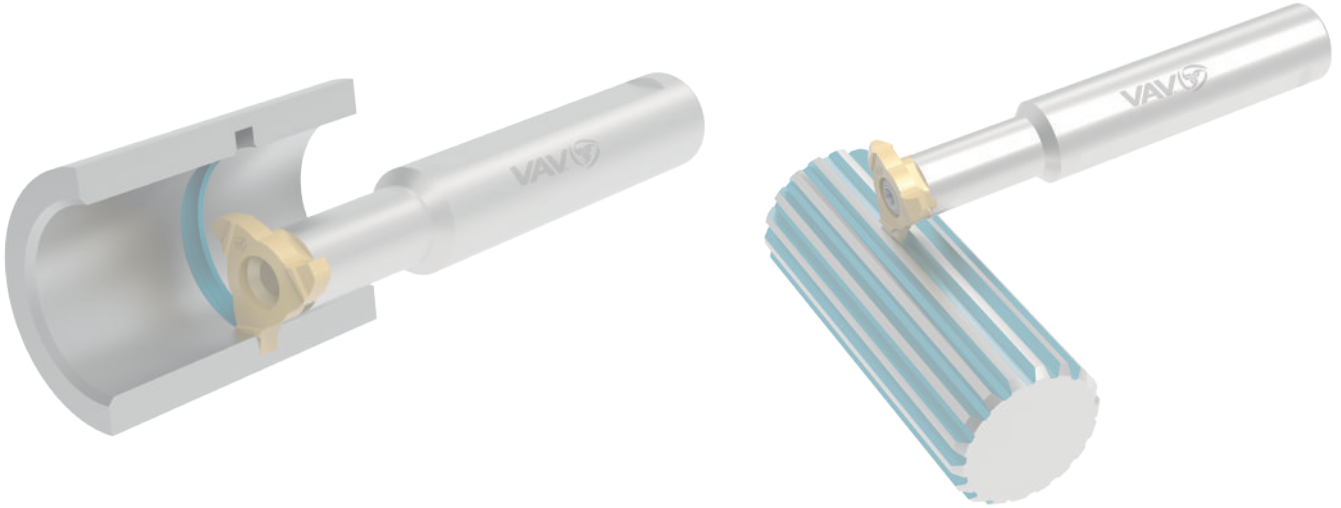


Takım Kodu Ordering Code Bestell-Bezeichnung	Stok Stock Lager	Takım Ölçüleri (mm) Dimension (mm) Abmessung (mm)					Kesici Uç Insert Wendescheidplatte	Yedek Parçaları / Spare Parts / Ersatzteile		
		DCONMS	DCONWS	LF	OHN	H		Sıkma Vidası Screw Klemmschraube	Tork Anahtar Torx Key Torx Innensechskantschlüssel	
E16H-M2806-042	○	16	14.5	100	42	-	MM2806...	1020-M5x14	80-T20	
E16L-M2806-060	○	16	14.5	125	60	-				
E20L-M2806-060	○	20	14.5	125	60	-				
E20N-M2806-085	○	20	14.5	160	85	-				

Ø Ds 27.7



Uç Kodu Insert Code Wendepplatten-Bezeichnung	Stok Stock Lager	Uç Ölçüleri (mm) Insert Dimension (mm) Abmessung (mm)						UYUMLU TAKIM / COMPATIBLE TOOLHOLDER / KOMPATIBLES WERKZEUG	Kalite Grade Sorte
		Ds	W	R	tmax	S	Z		
MM2806.G.0250.020.2770	○	Ø27.7	2.5	0.2	6.5	5.9	6-MM2806-0..	VP3001
MM2806.G.0300.020.2770	○	Ø27.7	3.00	0.2	6.5	5.9	6		VP3001
MM2806.G.0350.020.2770	○	Ø27.7	3.5	0.2	6.5	5.9	6		VP3001
MM2806.G.0400.020.2770	○	Ø27.7	4.00	0.2	6.5	5.9	6		VP3001
MM2806.G.0450.020.2770	○	Ø27.7	4.5	0.2	6.5	5.9	6		VP3001
MM2806.G.0500.020.2770	○	Ø27.7	5.00	0.2	6.5	5.9	6		VP3001



DİĞER PROFİL ÇEŞİTLERİ / THE OTHERS PROFILE TYPES / ANDERE PROFIL-TYPEN



THREAD PROFILE



GEAR PROFILE



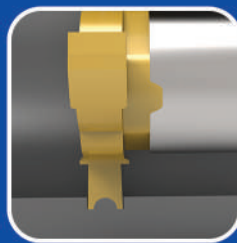
RADIUS GROVE PROFILE



CIRCLIP PROFILE



CHAMFER PROFILE

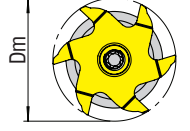
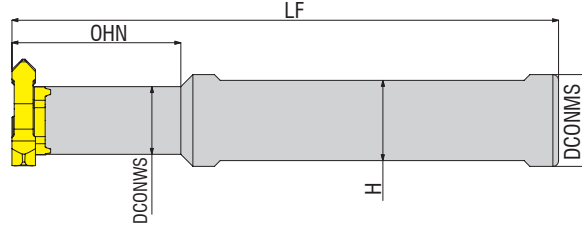


SPECIAL PROFILE

*Diğer profil uçlar özel taleplere göre üretilmektedir. / Profiled inserts are manufactured according to customer special requirements. / Die Profil-Wendeschneidplatten werden nach Kundenwunsch gefertigt.

Ø Ds 31.7

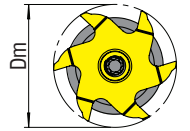
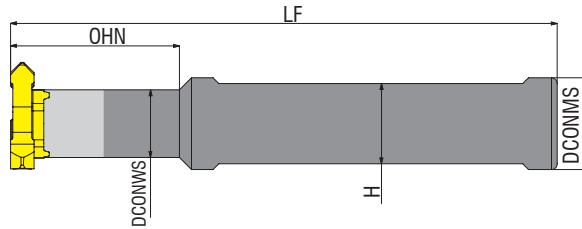
ÇELİK ŞAFT
STEEL SHAFT
STAHL SCHAFT



Takım Kodu Ordering Code Bestell-Bezeichnung	Stok Stock Lager	Takım Ölçüleri (mm) Dimension (mm) Abmessung (mm)					Kesici Uç Insert Wendeschneidplatte	Yedek Parçaları / Spare Parts / Ersatzteile	
		DCONMS	DCONWS	LF	OHN	H		Sıkma Vidası Screw Klemmschraube	Tork Anahtar Torx Key Torx Innensechskantschlüssel
A16G-MM3306-036	○	16	14.5	90	36	15	MM3306...	1020-M5x14	80-T20
A20H-MM3306-036	○	20	14.5	100	36	18			

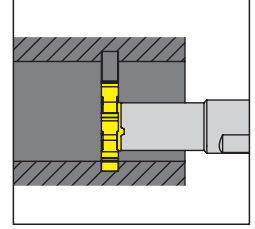
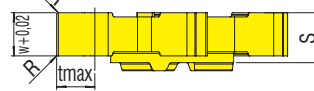
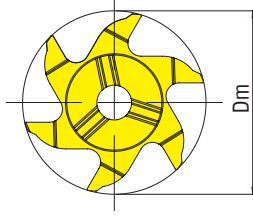
Ø Ds 31.7

KARBÜR ŞAFT
CARBIDE SHAFT
HARTMETALLSCHAFT

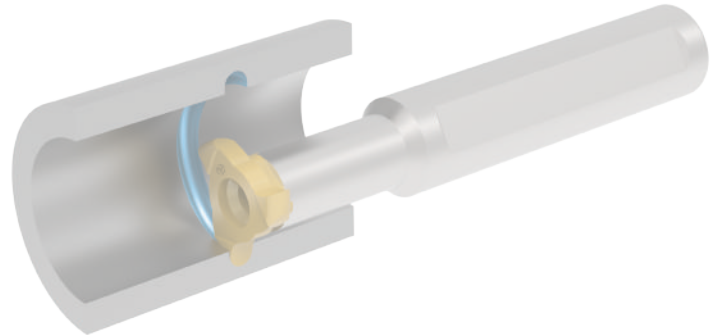
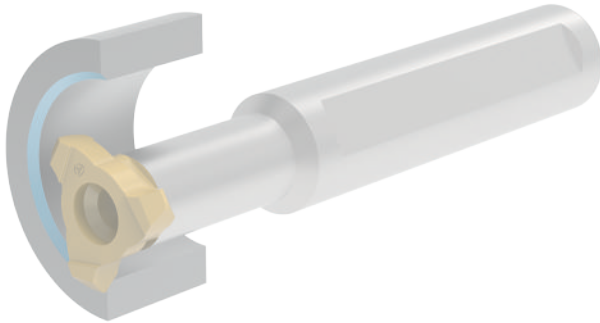


Takım Kodu Ordering Code Bestell-Bezeichnung	Stok Stock Lager	Takım Ölçüleri (mm) Dimension (mm) Abmessung (mm)					Kesici Uç Insert Wendeschneidplatte	Yedek Parçaları / Spare Parts / Ersatzteile	
		DCONMS	DCONWS	LF	OHN	H		Sıkma Vidası Screw Klemmschraube	Tork Anahtar Torx Key Torx Innensechskantschlüssel
E16H-MM3306-042	○	16	14.5	100	42	MM3306...	1020-M5x14	80-T20	
E16K-MM3306-060	○	16	14.5	125	60				-
E20H-MM3306-042	○	20	14.5	100	42				-
E20K-MM3306-060	○	20	14.5	125	60				-
E20N-MM3306-085	○	20	14.5	160	85				-

ø Ds 31.7



Uç Kodu Insert Code Wendepplatten-Bezeichnung	Stok Stock Lager	Uç Ölçüleri (mm) Insert Dimension (mm) Abmessung (mm)						UYUMLU TAKIM / COMPATIBLE TOOLHOLDER / KOMPATIBLES WERKZEUG	Kalite Grade Sorte
		Ds	W	R	tmax	S	Z		
MM3306.G.0200.020.2770	○	ø31.7	ø2.5	0.2	8.3	5.9	6-MM3306-0..	VP3001
MM3306.G.0250.020.2770	○	ø31.7	ø2.5	0.2	8.3	5.9	6		VP3001
MM3306.G.0300.020.2770	○	ø31.7	ø3.0	0.2	8.3	5.9	6		VP3001
MM3306.G.0400.020.2770	○	ø31.7	ø4.0	0.2	8.3	5.9	6		VP3001



DİĞER PROFİL ÇEŞİTLERİ / THE OTHERS PROFILE TYPES / ANDERE PROFIL-TYPEN



THREAD PROFILE



GEAR PROFILE



RADIUS GROVE PROFILE



CIRCLIP PROFILE



CHAMFER PROFILE



SPECIAL PROFILE

*Diğer profil uçlar özel taleplere göre üretilmektedir. / Profiled inserts are manufactured according to customer special requirements. /
Die Profil-Wendeschneidplatten werden nach Kundenwunsch gefertigt.